

Central Middle School

Week of November 1, 2019

Dear Colleagues,

I want to start by showing you how far we have come in the last year. On Saturday September 29, 2018 the demolition was nearly complete with the chimney being the last piece to hit the ground. We had a construction meeting on October 29, 2018. A note from that meeting reads: *"The construction schedule was reviewed. It was discussed since the previous meeting the building demo and the new building pad have been completed"*. That was big news a year ago BUT it was January 17 before we finally got started pouring footers.

A year has passed since then and I could not be more pleased.



Dr. Williams and I walked through the new construction Thursday afternoon. We started in the west hallway and things were very much as they were last week. We finally started seeing noticeable differences when we got closer to the gym.

The floor in the men's bathroom is complete and not covered. It is a very nice looking job.



Moving into the gym, the four HVAC units are mounted. This unit is located in the northwest corner of the gym. The metal frame located below and left of the unit is the frame for sheetrock to keep children from trying to climb the cross bracing behind the top of the bleachers in the center section of the gym. A similar frame is under the brighter purple sheetrock below and to the right of the unit. That is covering a beam at the top of the block wall.

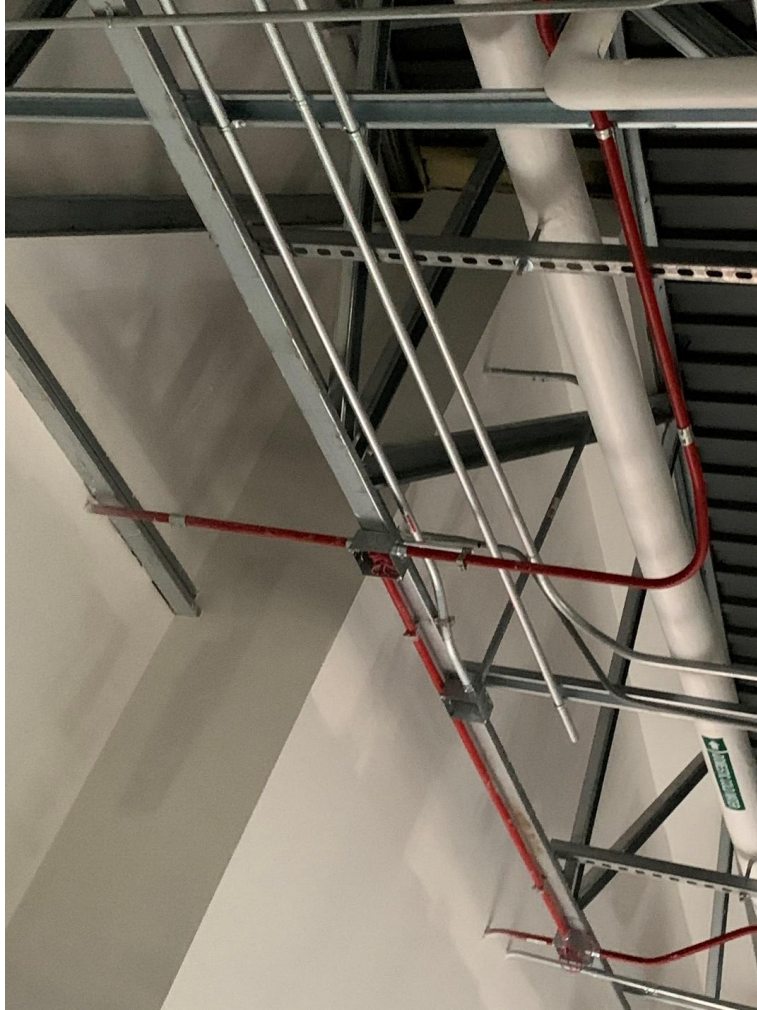


The B & M crew was working on the southwest unit when Dr. Williams and I walked by. They were discussing something you saw from me earlier tonight. They were wondering how they were to supply two connections with different voltages through only one conduit as conflicting drawings detail. I am certain they will come to a good workable solution.

The beam seen behind the frame in the next picture is the one mentioned earlier. The sheetrock simply cleans things up and makes the gym more attractive.



The weight room does not have a finished ceiling. The red conduit is for the fire alarm system and is located in the weight room.



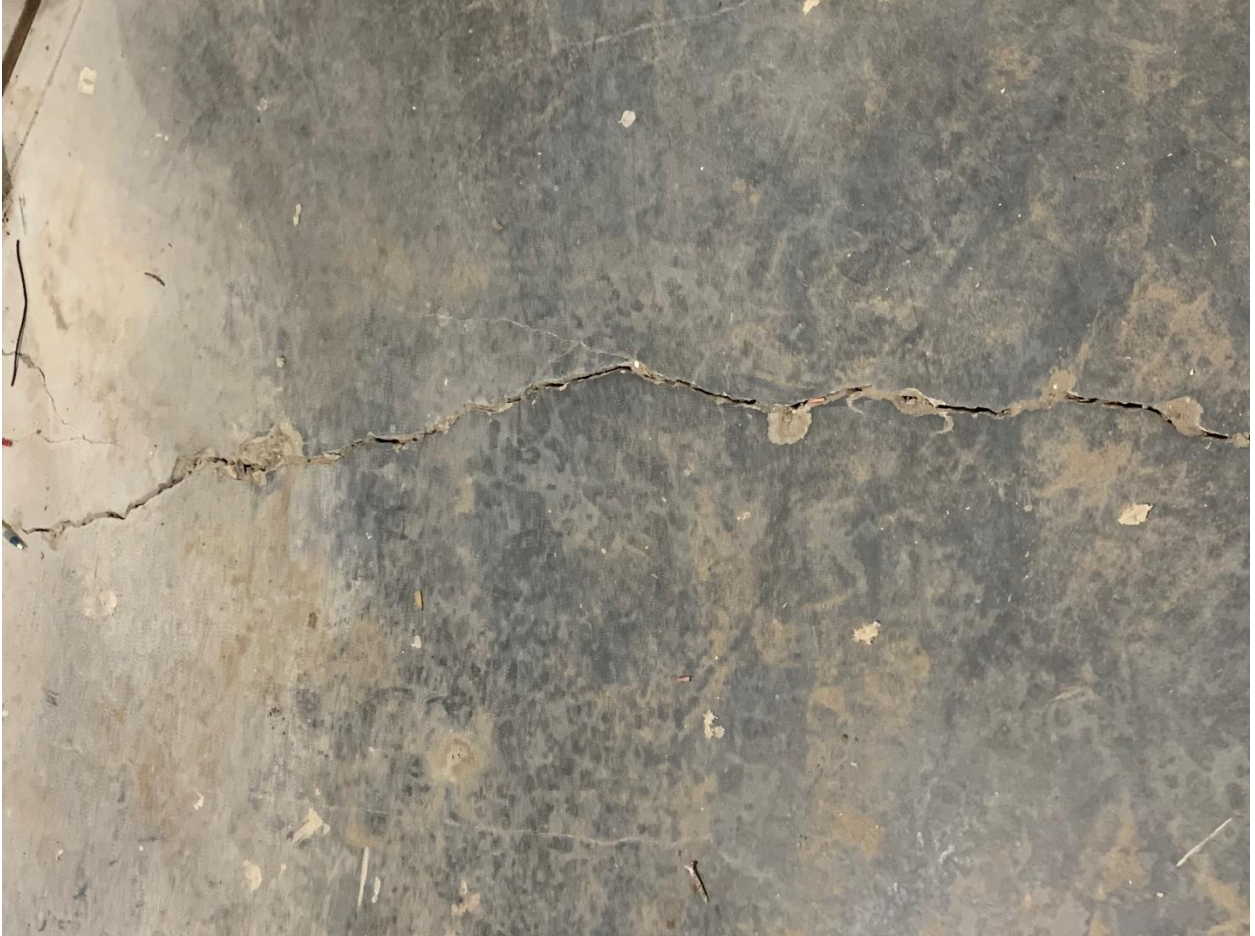
Walking the east hallway we find most classrooms with the ceiling grid in place, light fixtures mounted and in the center of the room the round thing is the smoke detector. This week is the first time we have noticed the smoke alarm sensor.



Our walkthrough is for multiple purposes. The first is to see what is taking place, make sure it looks as we expect things to look, learn how and why things are done and look for possible areas for improvement. The next photo is of the area at the front of the school between the new front entrance and the old building. The black plastic frame is a containment around a drain to collect the rainwater in this area. We noticed the gutter on the old building and asked Brian Plyler to look into piping that gutter to the pipe attached to the drain inside the plastic. This will help keep water from collecting on the concrete in this area creating a hazard in freezing weather.



When we got to the end of the east hallway where it meets the main hallway we found a sizeable crack. Expecting the floor tile process to begin shortly, I was concerned this crack will telegraph through the tile making an unsightly mess. I discussed the issue with Daniel Plyler. Mr. Plyler says the crack will be veed out with a grinder; an epoxy applied in the V followed by floor leveler and we should have no problem with the crack in the future.



We did pass inspection when the inspector finally showed up on Monday. The wheels are turning to get the power turned on. Brian Plyler hopes that will take place on Monday or Tuesday. Power will allow the BARD units to operate conditioning the air and turning the contractors loose to start dropping ceiling tiles, putting on a final coat of paint and laying floor tiles. The bad news is November and December are tough times for contractors to get much done with holidays consuming quite a bit of manpower and time.

Thank you for your continued interest, support and patience.

Ray